

Seabarn
3 Seahouse, Scremerston
Berwick-upon-Tweed, TD15 2RJ

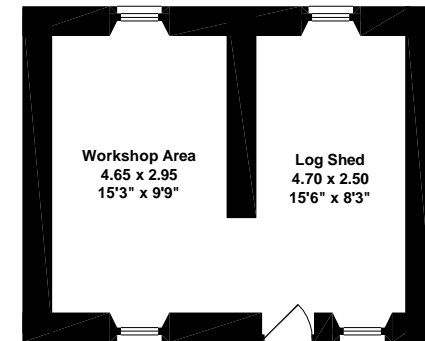
FOR IDENTIFICATION ONLY - NOT TO SCALE

Estimated Gross Internal Area (approx):

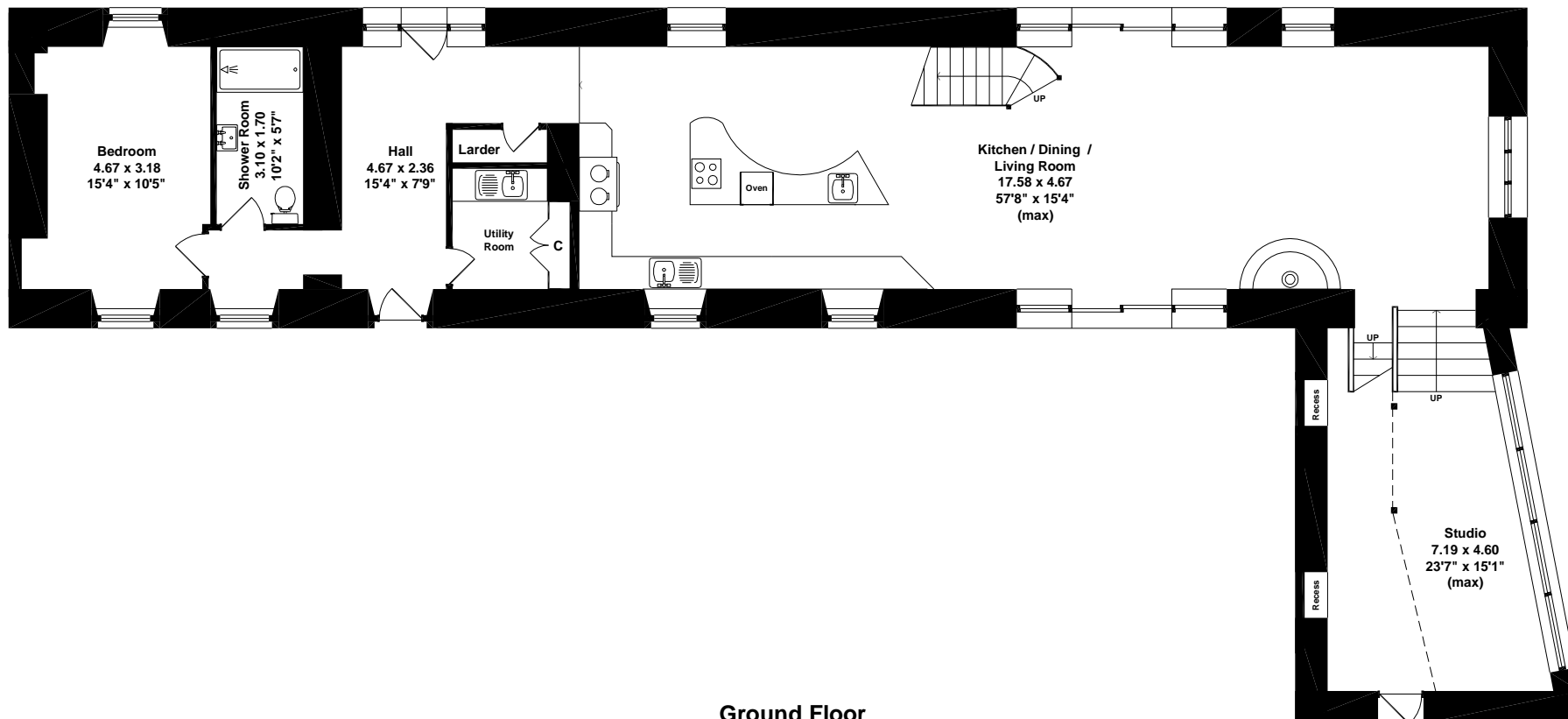
House = 296m² (3,186sqft)

Outbuildings = 27m² (290sqft)

© HONEYGRAM LTD 2012



Proximity and Position
of House to Outbuildings -
Not to scale



Ground Floor

Seabarn
3 Seahouse, Scremerston
Berwick-upon-Tweed, TD15 2RJ

FOR IDENTIFICATION ONLY - NOT TO SCALE
© HONEYGRAM LTD 2012

